

Dogger Bank Creyke Beck Community Working Group

25 April 2013



- Chair's welcome 18:45 – 18:50
- Previous actions 18:50 – 19:05
- General update on the project and consultation process 19:05 – 19:15
- Key impacts identified in the draft environmental statement 19:15 – 19:45
- Future of the community working group 19:45 – 20:00
- Question and answer session 20:00 – 20:25
- Chair's closing remarks 20:25 – 20:30

Chair's Welcome

Councillor Jump

Previous actions

Nikki Young

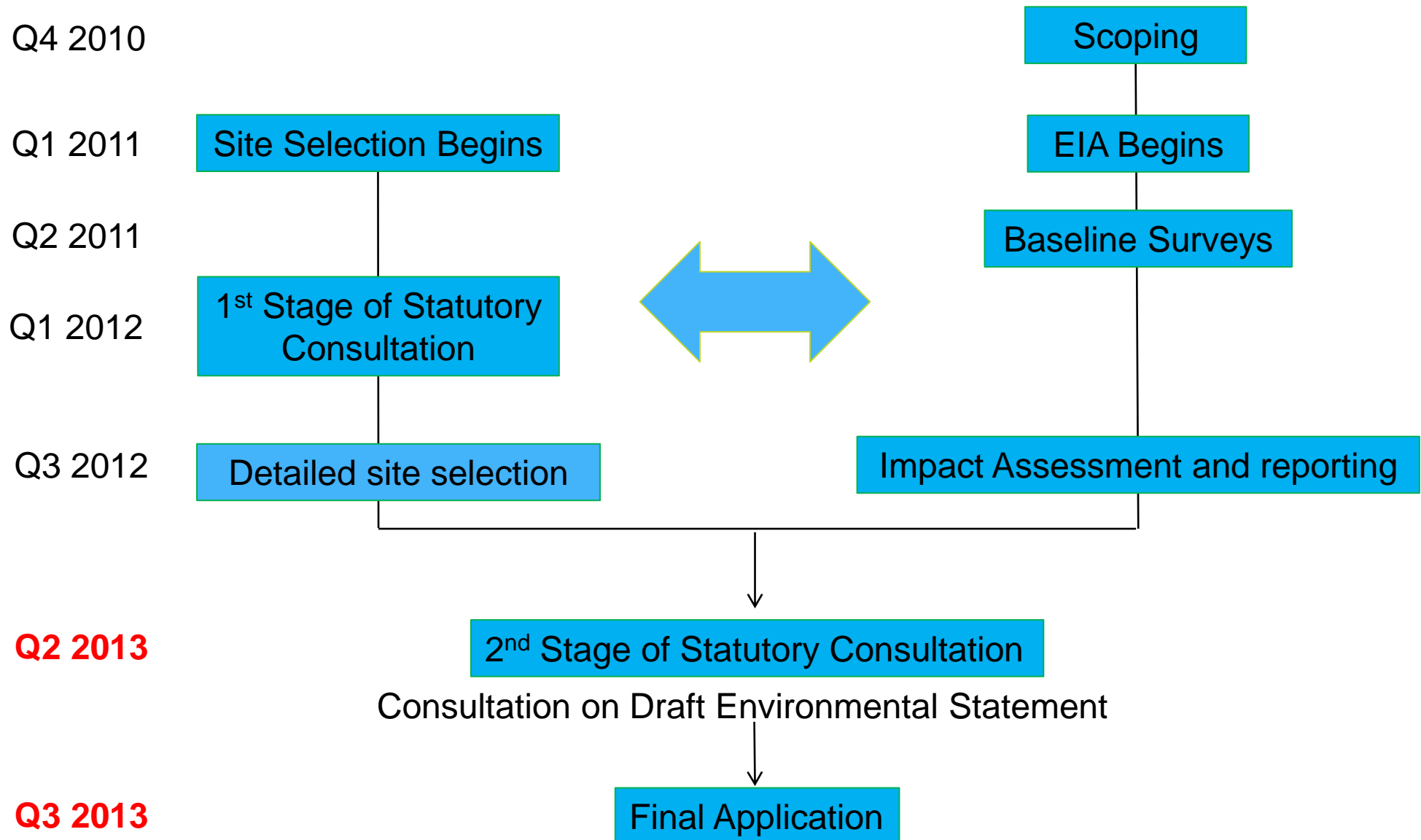
- **Forewind to confirm whether the block of woodland is protected from felling**
 - Forestry Commission has confirmed that the land owner is responsible for this woodland but that he would have to apply for a felling licence from the Forestry Commission. Forewind is looking to secure ownership of the woodland.
- **Forewind to explain how design principles such as the colour and material used for the converter stations and ancillary structures can be incorporated into the consent**
 - A Draft Code of Construction Practice will be submitted with the application
 - Detailed design, informed by any community consultation, will start post-consent
 - Post consent, the lead operator must submit plans of converter station and landscaping schemes to council for approval.
- **Forewind to investigate landscaping within Beverley Parks Nature Reserve. Forewind will also ensure any landscape works echo the existing landscape.**
 - Forewind has ruled out landscaping within Beverley Parks Nature Reserve as it would not provide suitable mitigation for visual impact of this project
 - The landscape mitigation proposals take into account the existing landscape

- **Forewind will look into the design of the Yorkshire Water waste treatments works building at Scarborough to assess if such a design would be suitable at Creyke Beck.**
 - This suggestion will be communicated to the lead operator for consideration during the detailed design process
- **Forewind to produce a visualisation of the view from St Mary's Church, Cottingham**
 - Completed.
- **Forewind will conduct thorough investigations along the route of the preferred temporary construction access for the AC cable route**
 - Access route has been buffered along the edge of A1079 as requested by the group. Confirmed the existing bridge is suitable for construction traffic. Temporary traffic management is required – will impact Public Rights of Way but they should remain open. Council is comfortable with plans.
- **Forewind will contact East Riding Archaeological Society in order to obtain any data useful for desk based elements of the archaeological work**
 - Completed

General update on project and consultation

Nikki Young

Site Selection and EIA



- When?
 - Documents were available from 19 April, **responses must be received by 11 June 2013**
- Who?
 - Statutory consultees including Parish Councils
 - Landowners and anyone with an interest in the land
 - The local community
 - The general public
- What?
 - Draft Environmental Statement and Non-Technical Summary
 - Draft Habitats Regulations Assessment Report
 - Available in local libraries, to download from www.forewind.co.uk, on request from Forewind and at the public exhibitions
 - Various other application documents including the draft Development Consent Order available on request from Forewind



A single DCO and a single ES are being consulted upon and submitted

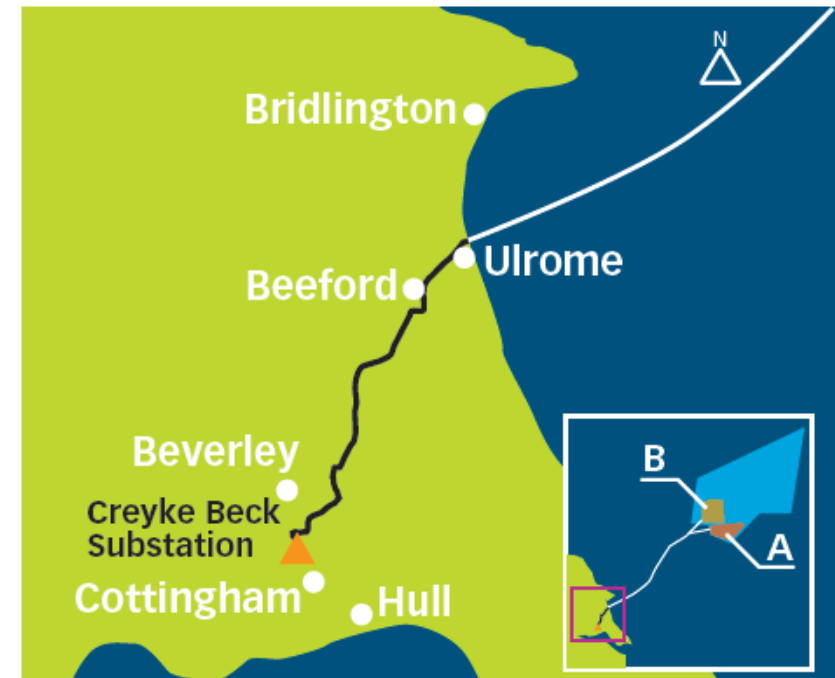
Onshore aspects / issues included in the DCO:

- Appearance of onshore works including details of layout, scale and levels, and a landscape strategy;
- Code of Construction Practice incorporating a construction environmental management plan;
- Construction Traffic Management Plan;
- Written Scheme of Archaeological Investigation;
- Ecological Management Plan and surveys for protected species;
- Details of proposed surface and foul water drainage systems;
- Scheme for the management and mitigation of artificial light emissions during operation and interference with telecommunications equipment;
- Scheme for onshore decommissioning based on the onshore decommissioning statement submitted with the application.

Public exhibitions

Venue	Date (2013)	Time
Ulrome Rickaby Hall Main Street, Ulrome, YO25 8TP	Tuesday 7 May	2 to 7.30pm
Beeford Community Centre Main Street, Beeford, YO25 8AY	Wednesday 8 May	2 to 7.30pm
Bridlington Spa South Marine Drive Bridlington, YO15 3JH	Thursday 9 May	11am to 6pm
Beverley Arms Hotel 25 North Bar Within Beverley, HU17 8DD	Friday 10 May	2 to 7.30pm
Cottingham Civic Hall Market Green, Cottingham HU16 5QG	Saturday 11 May	10.30am to 4.30pm
St Stephen's Shopping Centre 110 Ferensway, Kingston upon Hull, HU2 8LN	Sunday 12 May	10.30am to 4.30pm

Preview for community working group, MPs and councillors at 1pm on Tuesday 7 May

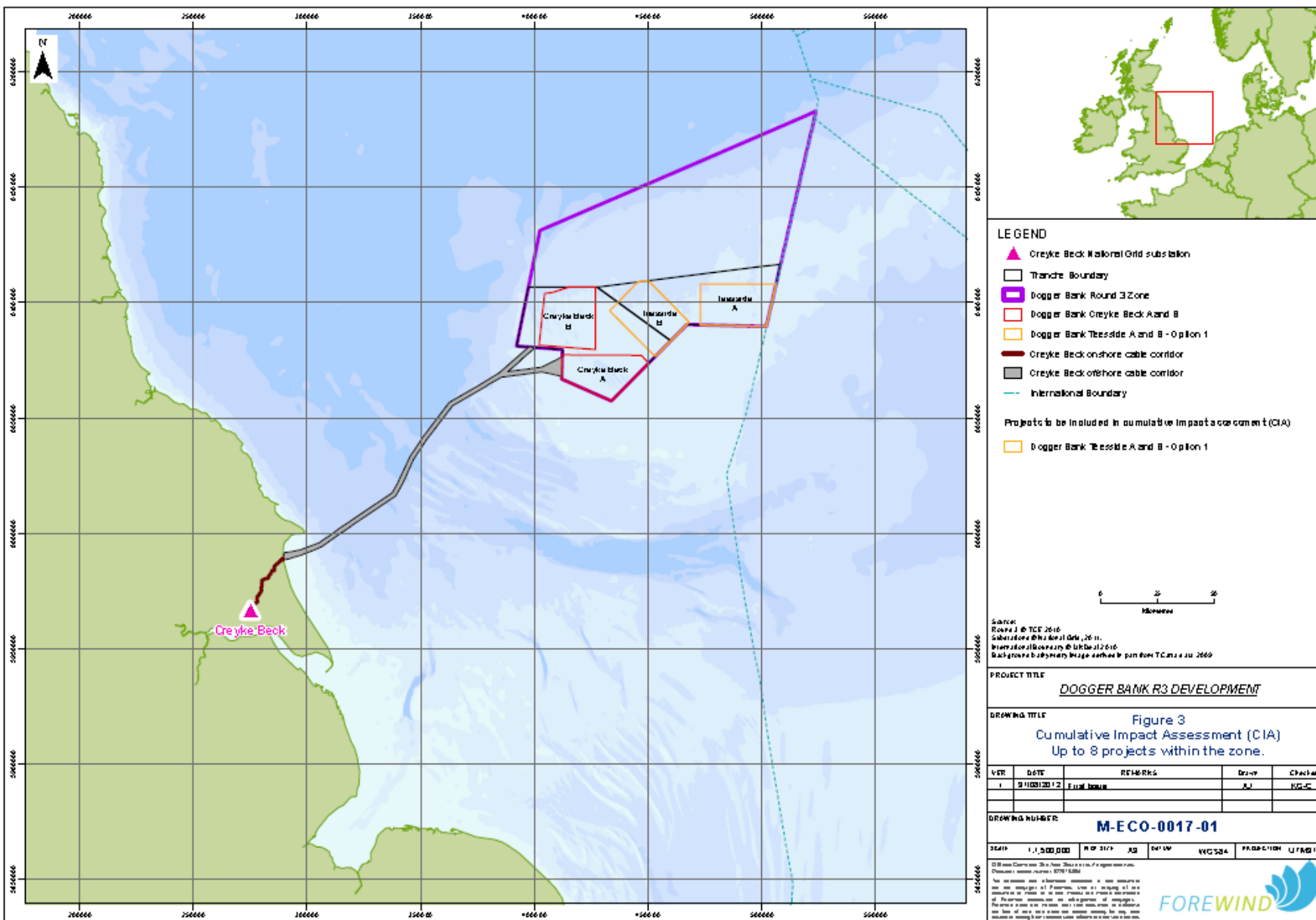


Key impacts identified in the draft environmental statement

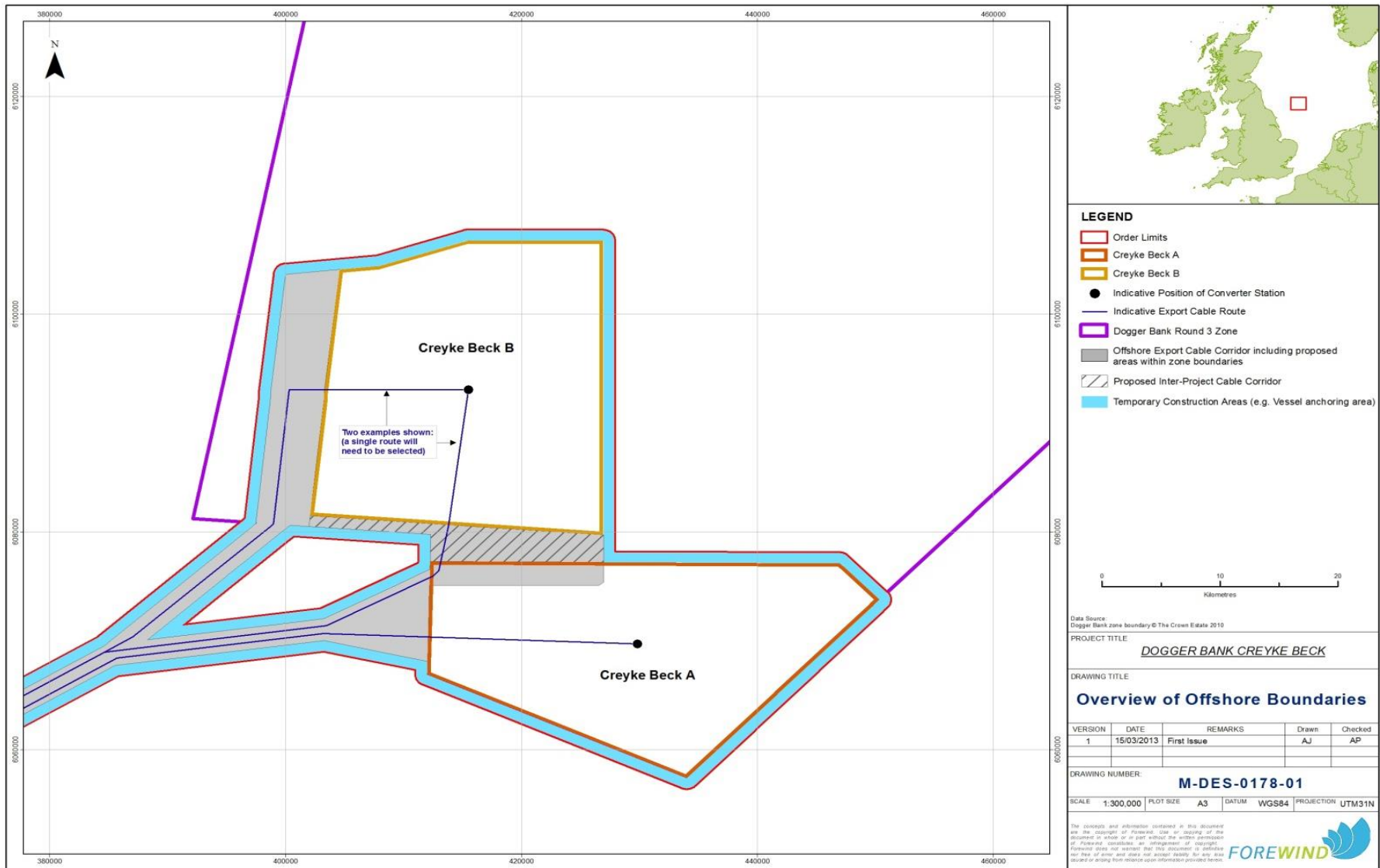
Andrew Riley

- Development Description
 - Offshore
 - Onshore
- Consultation Issues
 - Process
 - Timeline
 - Key questions (onshore aspects)
- Development Consent Order
- Environmental Statement
 - Onshore Chapters and key impacts
- Questions

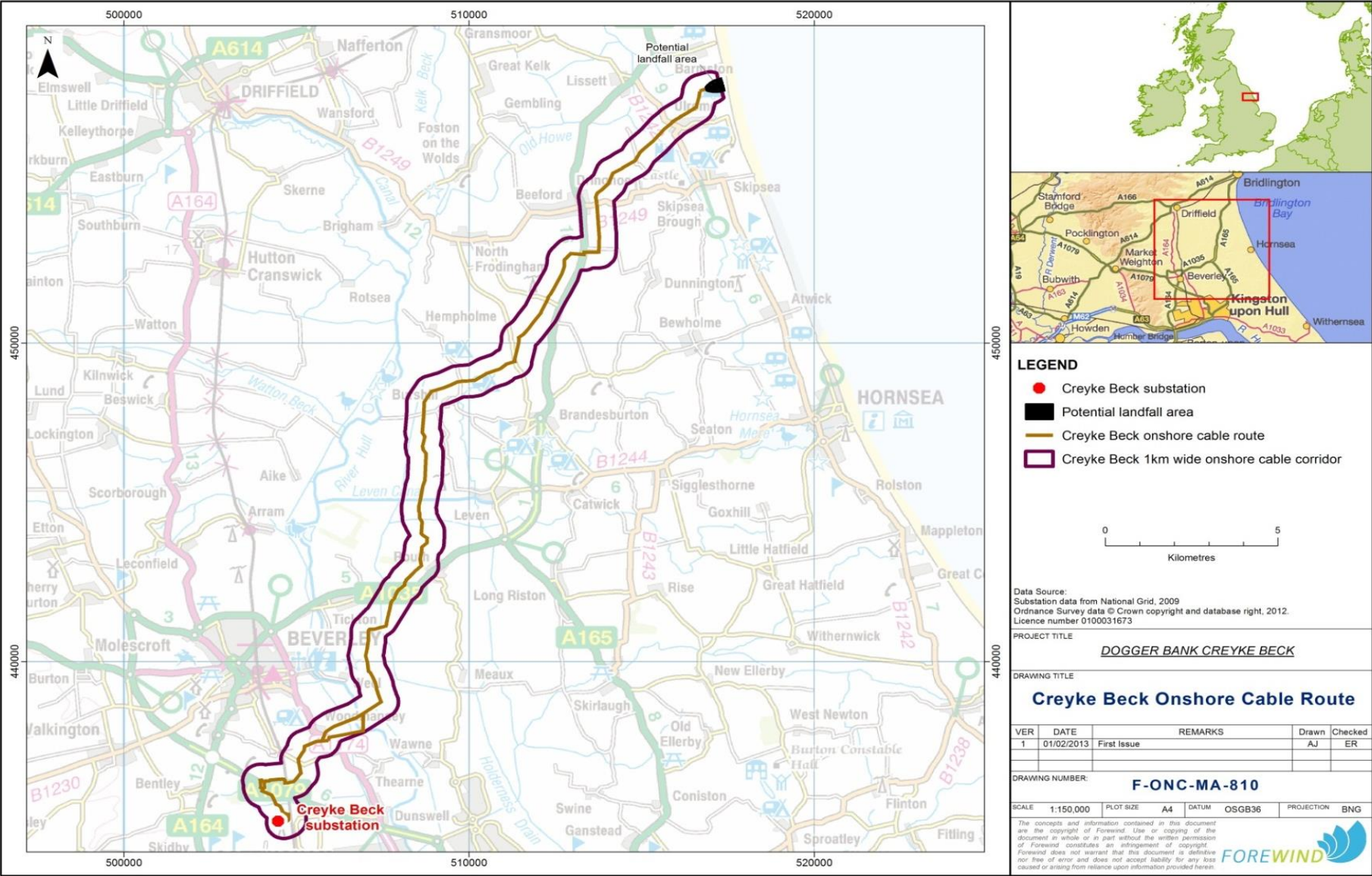
Development Description (1) – Overview



Development Description (2) - Offshore boundaries



Development Description (3) - Onshore cable route



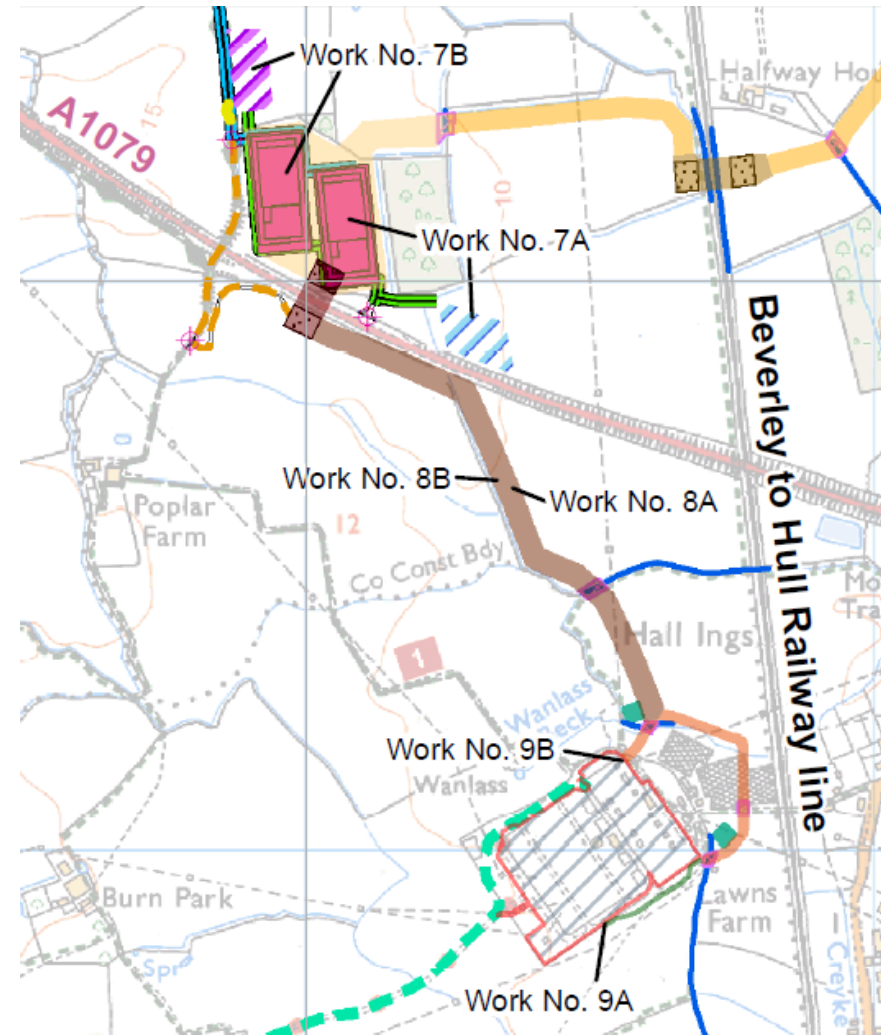
Development Description (4) - HVAC onshore cable route

- HVAC cable route length – approx. 2km;
- Previously Forewind presented 2 Options;
- Option 2 has greater potential impact on archaeological area of importance;
- Option 1 avoids impact on Park Lane;
- Forewind preference to limit the impact on Stewardship Scheme (Poplar Farm).

Option 1 (Eastern Option) is preferred HVAC route.

Key risks:

- Potential flood risk expected to be low;
- Noise and air quality – potential temporary impacts on residential properties (Lawns Farm) during construction.



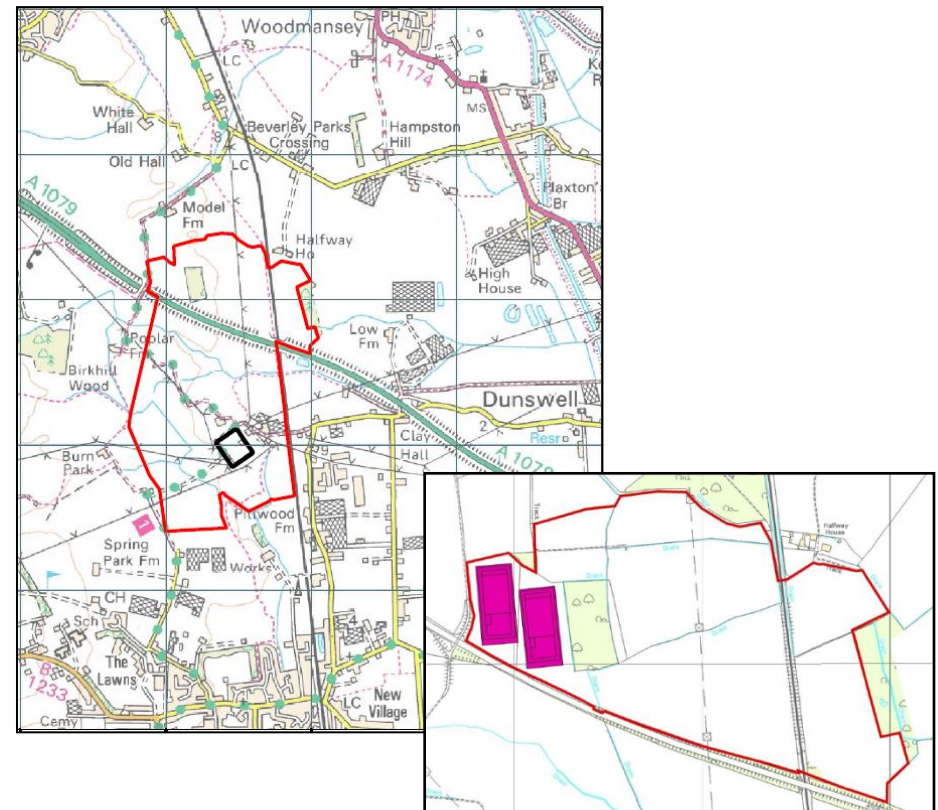
- Chapter 21a – Landscape Visual Character
- Chapter 22 – Socio-Economics
- Chapter 23 – Tourism and Recreation
- Chapter 24 – Terrestrial Geology, Water Resources and Land Quality
- Chapter 25 – Terrestrial Ecology
- Chapter 26 – Land Use and Agriculture
- Chapter 27 – Onshore Archaeology and Cultural Heritage
- Chapter 28 – Traffic and Access
- Chapter 29 – Noise and Vibration
- Chapter 30 – Air Quality

Onshore Converter Stations Site – site selection process in consultation with ERYC and Community Working Group. Full range of aspects considered, e.g. cultural/ scientific value of the site, flood risk, safe access and egress and existing land use.

Converter stations for both projects will be co-located, sited in rural area and will utilise existing screening.

Key Impacts:

- landscape and visual impacts of the construction activities associated with the converter stations site;
- operational landscape and visual impacts of the converter stations;
- 10 viewpoints assessed and agreed with ERYC, 5 major/moderate impacts and 5 minor/negligible.



Final converter stations study area

ES (3) - Example of major effect on one viewpoint



► Viewpoint 5 - National Cycle Route between Wanlass Farm and Poplar Farm : Scenario III

Figure 5.3

- This viewpoint is not covered in the draft ES as it was not an agreed viewpoint
- Panoramic views available from the church tower which lies approximately 3.5km to the south of the converter stations site;
- The lower parts of the converter stations will be screened by vegetation fringing the A1079 and the existing woodland block – magnitude of change will be low for all three scenarios



Photomontage: Proposed view from Top of Tower of St Mary's Church, Cottingham

ES (4) - Landscape and Visual

Proposed mitigation measures:

- Planting of new native woodland and copses;
- Habitat creation to enhance the existing landscape features and improve the biodiversity within the site;
- Implementation of attenuation swales and ditches to help manage run-off from harder surfaces;
- Agreement of management of the landscape and habitats during operation with ERYC;
- Detailed converter stations design (e.g. colour) to be agreed with ERYC post-consent; and
- Reinstatement of agricultural land post-construction, and reinstatement of converter stations site to agricultural land post-operation.



Landscape mitigation plan (indicative)



ES (5) - Terrestrial Geology, Water Resources and Land Quality

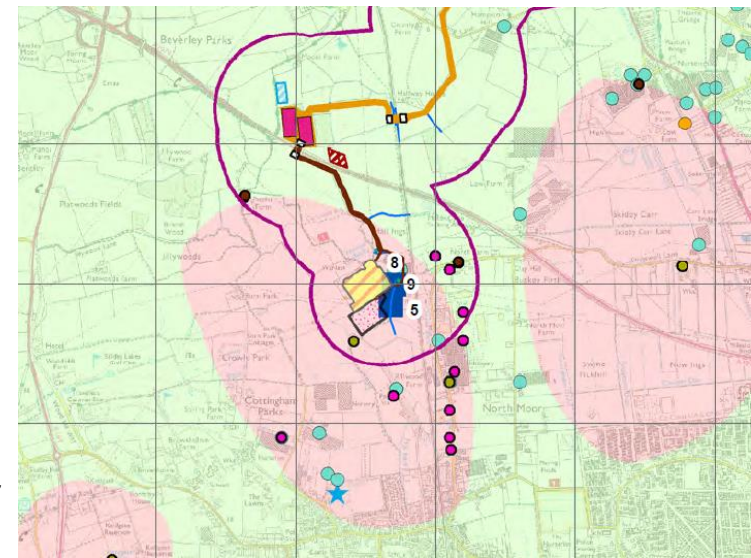
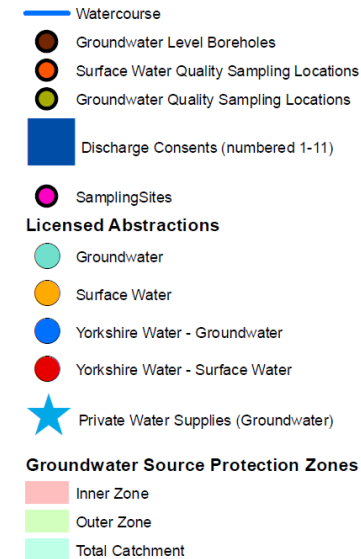
Flood risk assessed against 1 in 100 year flood event + future climate change. Converter stations site is within Flood Zone 1 (low risk of fluvial flooding).

Key impacts:

- Disturbance to geological features during construction (minor impact);
- Surface water quality and groundwater quality (negligible impact);
- Waste arising from excavations during construction (minor impact).

Proposed mitigation measures:

- Development of Site Environmental Management Plan;
- Appropriate handling and storage of soils;
- Development of a Site Waste Management Plan;
- Micrositing of cable route to avoid sensitive receptors;
- Specific guidelines for the use of Horizontal Directional Drilling (HDD).



Groundwater: converter stations site

‘Direct Impacts Study Area’:

- Largely classified as rural or agricultural land, 84% of the land classified as arable;
- Converter stations site classified as Grade 2 Agricultural Land (very good quality);

Key Impacts:

- Taking land out of existing use - minor impact;
- Loss of areas subject to Environmental Stewardship agreements - minor impact;
- Loss of soil resource and degradation of soils - minor impact;
- Impact on land drainage systems - minor impact;
- Disturbance and nuisance - minor impact; and
- Impacts on agricultural output and potential earnings - minor impact.

Proposed mitigation measures:

- Reinstating land to its former condition and use (where possible);
- Adherence to appropriate guidance re handling soils & minimising disease spread risk;
- Consultation with landowners and compensatory measures (where appropriate)

Detailed traffic and access assessment undertaken, resulting in development of 'Traffic and Access Strategy' with range of 'embedded' mitigation measures.

Key Impacts:

- No anticipated impacts in the operation phase of the development;
- Potential minor adverse impacts on pedestrian amenity, highway safety and driver delay (during construction and decommissioning).

Proposed mitigation measures:

- Horizontal directional drill (HDD) under major roads;
- Options for a permanent and construction access to the converter stations;
- Implementation of a Construction Traffic Management Plan and Travel Plan;
- Introduction of a temporary 30mph speed limit for some road links, construction signage, wheel wash/road sweepers and improved gritting/salting or maintenance regime.



WORKS TRAFFIC - 7304



WORKS TRAFFIC - 7305



CAUTION LORRIES TURNING

TYPICAL CONSTRUCTION SIGNAGE
TO BE CONFIRMED BY SITE CONTRACTOR

Study area included:

- 1km wide corridor for HVDC cable route;
- 2km wide buffer around the converter stations site (includes the HVAC cable route).

The noise assessment carried out using 13 monitoring locations along the cable route and 6 monitoring locations around the converter stations site.

Stakeholders concerns:

- Impact of construction noise (considered for the cable route and converter stations);
- Impact of operational noise (considered for the converter stations).

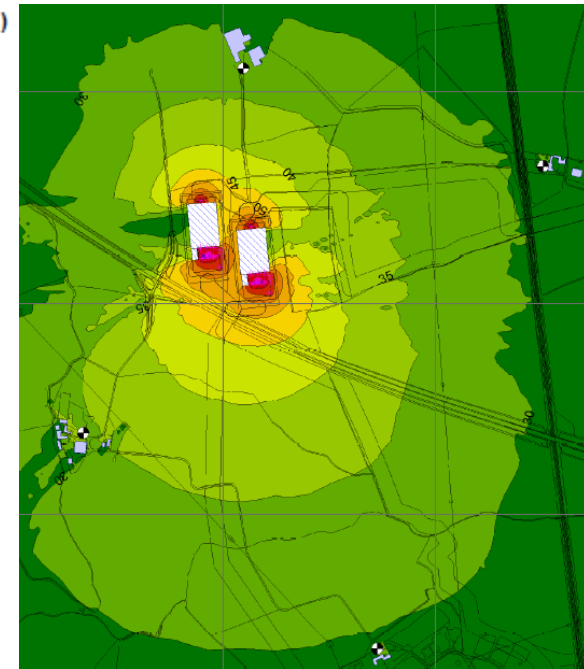
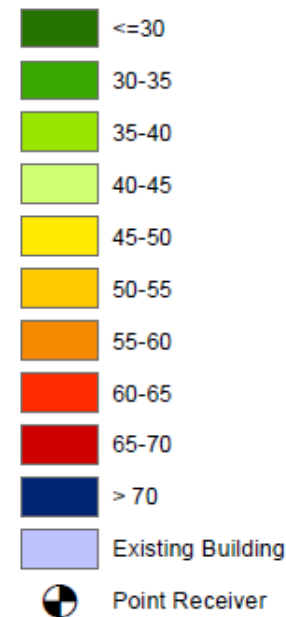
Key Impacts:

- 2 receptors anticipated to experience medium or high magnitude effects during construction phase *pre-mitigation*. With mitigation - effects minor or negligible;
- 3 receptors anticipated to experience high magnitude effects during operational phase *pre-mitigation*. With mitigation - effects negligible.

Proposed mitigation measures:

- Erection of solid site boundary hoarding fences (approx. 2.4m in height) prior to commencement of cable installation and throughout construction (where appropriate);
- Employ a set of generic best practice working practices during construction phase (Best Practicable Means);
- Potential methods for reducing anticipated converter station operational noise:
 - ✓ selection of quieter equipment;
 - ✓ installation of acoustic enclosures and barriers;
 - ✓ silencing of exhausts/outlets for air handling/cooling units;
 - ✓ locating equipment to take advantage of screening inherent in design.

Noise Rating Level (dB LA, 5 min)



Noise contours from mitigated converter stations A and B

Receptors:

- Potential receptors within 1km of onshore cable route & 2km of converter stations site;
- Wider landfall area considered (from Bridlington to Withernsea);
- Tourism - historic sites, high sensitivity & coastal towns medium sensitivity.

Key Impacts:

- Moderate - temporary closure of 1km of Beverley 20 (construction);
- Moderate during operation on the Beverley 20 footpath;
- All other residual impacts minor or negligible.

Commitments:

- Liaison with PRow officer to identify suitable temporary diversions;
- Ensure any diversions are established prior to closure;
- Ensure good communication with the local community regarding any closures;
- Reinstatement of any feature immediately following construction phase.



Baseline monitored and assessed against air quality objectives for area (2 ERYC monitoring stations near onshore cable route and converter stations study area).

Key Impacts:

- Background air quality levels, dust (earthworks) & Non Road Mobile Machinery (NRMM);
- All residual impacts considered negligible.

Proposed mitigation measures:

- Environmental Management Plan inc a Dust Management Plan (approved by LPA);
- Compliance with regulations and directives on NRMM emissions;
- Damping down dusty activities, covering earthworks and appropriate hoarding/fencing;
- Use of a wheel wash and covering vehicles entering and leaving the site.

Questions and Answers

Future of the community working group

Nikki Young



- *13. The group is expected to meet quarterly during 2012 in the lead up to the Development Consent Order application/s being submitted. The ongoing requirement for the Creyke Beck Working Group beyond this time will be discussed with the group and determined by Forewind*
- **Proposal**
- One more meeting just before application to outline the final proposals and the examination process
- If application is accepted for examination, members can register a relevant representation to the Planning Inspectorate and should correspond with the Inspectorate rather than Forewind

Chair's closing remarks

Councillor Jump

Thank you